

Nov. 2022

"ALBA"

- Julia Constance Wiger = Nordias

FÜR BLECHBLÄSERKVINLETTE
UND SCHLAGEGEG (PAUKEN, MARIMBA)

dämpfern: (open = ohne dämpfer)

TRP1 - harmon mute (stem out / stem in), velvet mute.

TRP2 - straight mute, cup mute. \rightarrow o = ohne hand. \rightarrow + = hand vor stem.

HRN - mute, gestopft.

POS - straight mute, cup mute.

\times = nur luft

marimba schlägeln:

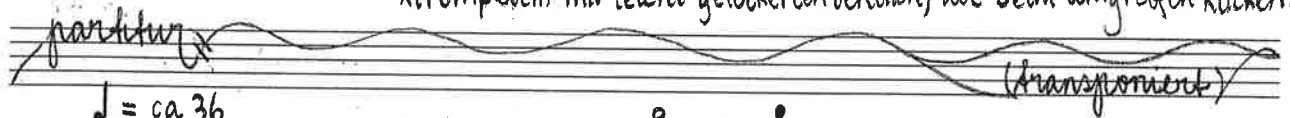
\circ hart, \circ halbweich,

\circ weich, (\circ bogen (cello o.ä.)

\perp = strich, pitchless

*trompeten: mit leicht gelockerten ventilen, die beim umgreifen klicken.

51



harmoni mute stem in, o

♩ = ca 36

TROMPETE 1. (B \flat)

TROMPETE 2. (B \flat)

HORN (F)

POSAUNE

TUBA

PAUKE (F \sharp , D)

TRP 1

(harmon) stem out \flat open harmon mute

$\text{mf} > \text{p}$ $\text{mp} > \text{p} < \text{mp}$ pp p

Musical notation for TRP 1 in 4/4 time. It features a melodic line with a stem-out flat note, an open note, and a harmon muted note. Dynamics range from mf to p.

TRP 2

straight mute

p $\text{p} < \text{mf}$ p

Sub ad lib molto vibr gliss open

Musical notation for TRP 2 in 4/4 time. It includes a straight muted note, a glissando, and an open note. Dynamics range from p to mf. Performance instructions include 'Sub ad lib' and 'molto vibr'.

HRN

$\text{♩} = \text{ca } 44-46$

vibr. \rightarrow ohne vibr.

mp pp $\text{mf} > \text{p}$ p mp p

mute poco vibr

Musical notation for HRN in 4/4 time. It shows a melodic line with vibrato and a muted section. Dynamics range from mp to p. Performance instructions include 'vibr.', 'ohne vibr.', and 'poco vibr'.

POS

$\text{♩} = \text{ca } 44-46$

straight mute

p mf sub p

3 molto vibr ten. 5

p ff p $>$

Musical notation for POS in 4/4 time. It features a straight muted note, a triplet, and a tenor note. Dynamics range from p to ff. Performance instructions include '3', 'molto vibr', and 'ten. 5'.

TUB

$\text{♩} = \text{ca } 44-46$

vibr. \rightarrow ohne vibr.

mp ppp p ff mp $\text{pp} < \text{p}$

ten. 5

Musical notation for TUB in 4/4 time. It includes a melodic line with vibrato and a tenor note. Dynamics range from mp to ppp. Performance instructions include 'vibr.', 'ohne vibr.', and 'ten. 5'.

PK

$\text{♩} = \text{ca } 44-46$

$\text{pp} < \text{mp} > \text{pp}$ ppp pp

MARIMBA:

Musical notation for PK in 4/4 time. It features a triplet and a marimba section. Dynamics range from pp to ppp. The text 'MARIMBA:' is written at the end of the staff.

Handwritten musical score for six instruments: TRP1, TRP2, HRN, POS, TUB, and MARIMBA. The score is written in treble and bass clefs with various time signatures (7/8, 2/4, 3/4) and includes performance instructions such as "stem in, +", "cup mute", "gliss", "luft", "open", "muted", "cresc", and dynamic markings like *pp*, *p*, *mf*, *f*, *ppp*, and *pp*. It features complex rhythmic patterns, including triplets and slurs, and dynamic swells.

TRP1: (harmon.) stem in, +. *pp*, *p* >. *open*. *ppp*, *f*, *p*, *mf*.

TRP2: *luft*. *mf* > *p*, *mp* >. *cup mute*. *molto vibr.*. *p* < *mf* > *p*.

HRN: (mute). *p* > *ppp*. *mp*. *open*. *ppp*, *f*, *p*, *mf*.

POS: *open*. *mp*. *gliss*. *mp*. *ppp*, *f*, *p*, *mf*.

TUB: *open*. *mf* > *pp*. *mp*. *ppp*, *f*, *p*, *mf*.

MARIMBA: *p*. *mp*, *f*. *pp* < *mf* > *p*. *cresc*. *mf*. *p*.

TRP 1 *harmon mute, stem in, o* *mp > pp* *mf > pp* *rit tempo primo*

TRP 2 *(cup)* *ff < mf < p* *straight mute* *P < f > p* *rit tempo primo*

HRNI *ff > p* *mp > pp* *mf > mf mp p* *rit tempo primo*

POS *8va ad lib* *luft (pitched) mit gliss. tönen* *ff > pp* *cup mute* *mp < f > mf mp p* *rit tempo primo*

TUB *8vb ad lib* *ff > p* *mp < f > mp* *rit tempo primo*

MBA *strich: (MBA:) ♀ ↓ ↑ ↓ ↑* *PAUKE: mf < f > mp* *strich: ll* *MARIMBA: p < mf > p < mp >* *rit tempo primo* *(bogenstrich)*

(harmon) stem out b

TRP 1

mp > pp

velvet mute

TRP 2

(straight)

cup mute

ohne vibr

HRN

gestopft

open

ten. luft (pitched)

mp > pp

p

mf > p

POS

(cup)

molto vibr

ten. luft (pitched)

pp

mp

mp < mf >

TUB

luft (pitched)

ten.

p < mf > p

mp

mp

MBA

9x4

(MARIMBA:)

mp

pp

mp

PAUKE: